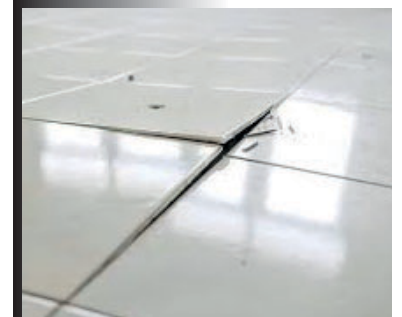




## CEMENT GROUT BOOSTER

### BENEFITS

- Polymer Admixture for use in place of water with Un-sanded Grouts like ADICRETE 600 and Sanded Grouts like ADICRETE 500
- For Interior and Exterior, Floor and Wall application
- For all types of Tiles, Stones and Bricks
- Highly Colour Fast and Anti Bacterial
- High Resistance to Water, Stain, Shock and Weather
- Anti Cracking and Non Shrink
- Flexible, Durable and Germ Proof



### SPECIFICATIONS

Colour	Milky white
Mixing	a) 350ml-400ml per kg of Unsanded Grouts like ADICRETE 600 series b) 150ml-200ml per kg of Sanded Grouts like ADICRETE 500 series
Pot Life	1 Hour
Foot Traffic	48 Hours
Packing	200ml, 400ml, 1lit, 5lit, 20lit